



Winchester

Rich, rustic elegance describes this leather from India that is dressed with wax and oil, then milled and polished. This leather’s burnished, polished surface is complemented by a velvety texture that will become more visually appealing with age and with wear. Winchester is prized by designers, due to its ability to be tailored beautifully on a variety of frames.

Features

- Combination wax/oil tannage
- Polished surface
- Milled for extra softness

Avg. Hide Size

35-40 sq ft
3.25

Country of Origin

India

Finish

Full Grain

Grain

Full Grain

Configuration

Whole Hide

Avg. Hide Thickness

1-1.2 mm

Tannage

Chrome

Character

Naturally Milled

Hide Type

Buffalo

Testing

CA-117, ASTM D 4157,
AATCC 8 Wet/Dry
Crocking



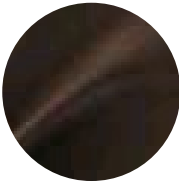
Balsam



Beige



Chimney



Coffee Bean



Dove



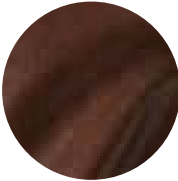
Fir



Flamenco



Heather Grey



Mahogany



Nut



Onyx



Pacific



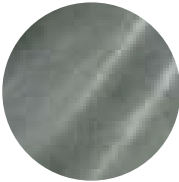
Pewter



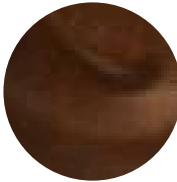
Sandstone



Sienna



Storm



Sycamore



Thunder



Tide