



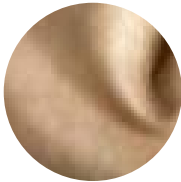
Verona

Our Verona collection features a transfer pattern on our Cottswald base that resembles a faux painting technique on an accent wall. This article is Special Order only.

Features

- Transfer pattern resembling faux painting technique
- Cottswald base leather

Avg. Hide Size	Avg. Hide Thickness
25 sq ft	1.4-1.6 mm
2.32	
Country of Origin	Tannage
Italy	Chrome
Finish	Character
Nubuck	Nubuck
Grain	Hide Type
Full Grain	Bovine
Configuration	Testing
Half Hide	Upon Request Only



Bisque 24K Gold



Camel Gold Patina



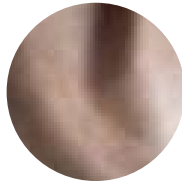
Granite 24K Gold



Granite Enchanted Silver



Ivory 24K Gold



Pebble Taupe Enchanted Silver



Slate Grey 24K Gold



Slate Grey Enchanted Silver