



# Tribeca

Crafted in Italy, Tribeca is a favorite amongst our semi-aniline leathers. Created from German bull hides, this leather has a tight grain with a smooth breathable finish. With a lightweight hand featuring a distinctive pebble-grain and a protective finish, Tribeca is a go-to for all industries.

## Carbon Neutral Leather by Moore & Giles

By choosing Tribeca, you will be offsetting embodied carbon impact through verified carbon offsets. [Read More](#)

## Features

- Beautiful pebble grain added for extra dimension and texture
- Soft drapey hand
- Finish has been applied for excellent color consistency
- Ideal for public spaces

### Avg. Hide Size

50 sq ft  
4.65

### Country of Origin

Italy

### Finish

Semi-Aniline

### Grain

Corrected

### Configuration

Whole Hide

### Avg. Thickness

1-1.2mm

### Tannage

Chrome

### Character

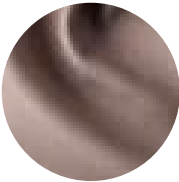
Pebbled

### Hide Type

Bovine

### Testing

CA-117, NFPA-260, ASTM D 2097 Flexing Crack Resistance, ASTM D 6182 Flexibility and Adhesion of Leather, ASTM D 4705 Stitch Tear, ASTM D 6012 Resistance to Bleeding (Color Transfer), ASTM 2208-16 Seam Breakage, ASTM D 2211 Elongation



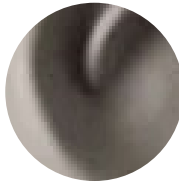
Alpine



Arctic White



Black



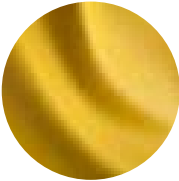
Chelsea



Chestnut



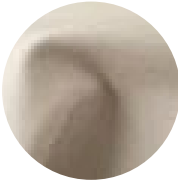
Chianti



Citrine



Cobalt



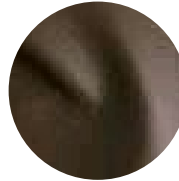
Cream



Espresso



Evening Dove



Fedora



Frost



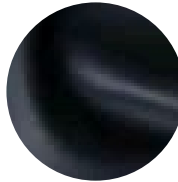
Glass



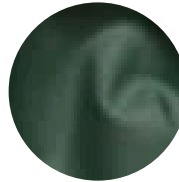
Granite



Habanero



Indigo



Juniper



Lagoon



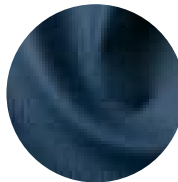
Laurel



Mayan



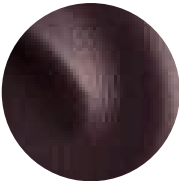
Merlot



Moonlight



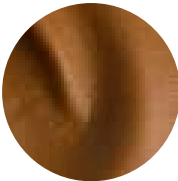
Nightfall



Orchid



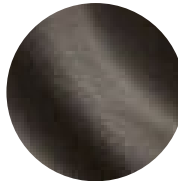
Oyster



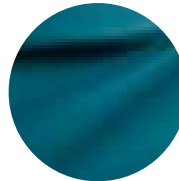
Parquet



Pewter



Quarry



Riviera



Sandstorm



Scarlet



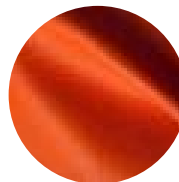
Sky Blue



Smoke



Stone



Tango

of Leather, Fluid  
Resistance



Tidal



Zest