



Tiburon

Blurring the lines of form and function, Tiburon is hand-crafted in Italy with a semi-aniline finish, allowing it to thrive in many scenarios. Each hide averages upwards of 50 square feet in size, allowing for an excellent cutting yield, and offers color consistency with a subtle tone-on-tone finish spanning throughout, making it a go-to choice for a variety of upholstery needs.



Features

- Soft hand and feel
- Color uniformity
- Durable semi-aniline finish

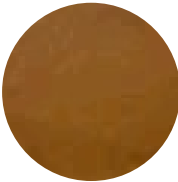
Avg. Hide Size	Avg. Thickness
50-55 sq ft	1.0-1.2 mm
4.65	
Country of Origin	Tannage
Italy	Chrome
Finish	Character
Semi-Aniline	Smooth
Hide Type	Configuration
Bovine	Whole Hide
Grain	Testing
Full Grain	CA-117 PASS



Cream



Mink



Saddle



Smoke