



# Teju Lizard

Teju Lizard features an exotic pattern on our satin suede that emulates the teju lizard of the desert. A luxurious suede from the finest suede tannery located in Valencia, Spain. The leather goes through a treatment in the tanning process, which imparts water repellency properties from face to front for better and easier maintainability. A unique transfer process is applied to the leather with heat and pressure to create a modern, angled variation of a Scottish tartan plaid while maintaining the beautiful properties of the suede.

A unique heat-transfer process allows for any color combination to be firmly embedded on the leather’s surface with the most intricate of detail. A modern interpretation of a trendy, sought-after design, the suede’s soft nap combined with the pattern’s metallic sheen results in a leather that is overwhelmingly appealing to the eye and to the touch.

This is made to order. Production time is 2-3 weeks. Samples are stocked in limited quantity and may not be immediately available.

## Features

- Exotic lizard transfer pattern on soft drapey aniline suede

<b>Avg. Hide Size</b>	<b>Avg. Thickness</b>
16 - 18 sq ft	1.3-1.5mm
1.49 - 1.67 sq m	
<b>Country of Origin</b>	<b>Tannage</b>
Spain	Chrome
<b>Base Leather</b>	<b>Finish</b>
Satin Suede	Suede
<b>Character</b>	<b>Grain</b>
Suede	Split
<b>Hide Type</b>	<b>Configuration</b>
Bovine	Double Butt
<b>Hor. Plate Ln</b>	<b>Testing</b>



Black Multi Bronze



Blue Moon Glaze



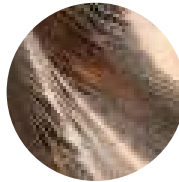
Buttercup



Buttercup Multi Bronze



Cream



Cream Multi Bronze



Cream Multi Pewter



Smoke Matte



Stormy



Stormy Matte



Taupe Copper Bronze

