



# Symphony

Crafted in New Zealand, Symphony is one of the season’s most elegant introductions. Taking its cue from some of the most coveted leathers on the runway, it features a buttery, soft hand and an inherent drapiness that is luxuriously lightweight. When upholstered, the depth of this leather is further enhanced by a subtle pull-up effect that imparts it with a refined and tailored aesthetic.



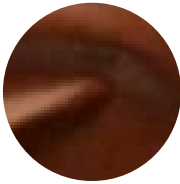
## Features

- Buttery, soft hand
- Luxuriously lightweight
- Subtle pull-up effect

<b>Avg. Hide Size</b>	<b>Avg. Thickness</b>
35 – 40 sq ft	1-1.2mm
3.25 – 3.72 sq m	
<b>Country of Origin</b>	<b>Tannage</b>
New Zealand	Chrome
<b>Finish</b>	<b>Character</b>
Aniline Plus	Smooth
<b>Grain</b>	<b>Hide Type</b>
Full Grain	Bovine
<b>Configuration</b>	<b>Testing</b>
Whole Hide	Upon Request Only



Black



Nutmeg