



Style Point

Style Point is an intricate and delicate transfer pattern that resembles the geometric shape of early European lace. This is an ornate transfer that adds a soft, glamorous and modern touch to any base color.

This is made to order. Production time is 2-3 weeks. Samples are stocked in limited quantity and may not be immediately available.



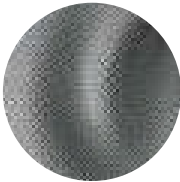
Features

- Diamond pattern applied to suede
- Soft surface with elements of dimension

Avg. Hide Size	Avg. Thickness
16 - 18 sq ft	1.3-1.5mm
1.49 - 1.67 sq m	
Country of Origin	Tannage
Spain	Chrome
Base Leather	Finish
Satin Suede	Suede
Character	Grain
Suede	Split
Hide Type	Configuration
Bovine	Double Butt
Testing	
CA-117, NFPA-260	



Black Black Pearl



Black White



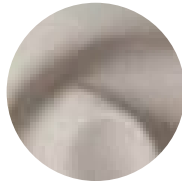
Blue Moon Rose Gold



Cream Platinum



Cream Silver Matte



Cream White



Stormy Silver Matte