



Riccio

Riccio features a dressed-up herringbone pattern on a Satin Suede base that was inspired by the Riccio sterling silver jewelry of Italy. The end result is a leather that draws you in with its lavish glamour and modern elegance.

This is made to order. Production time is 2-3 weeks. Samples are stocked in limited quantity and may not be immediately available.

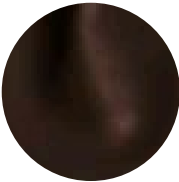


Features

- Herringbone pattern on suede
- Reminiscent of Italian Riccio sterling silver jewelry
- Soft surface with elements of dimension

Avg. Hide Size	Avg. Thickness
16 - 18 sq ft	1.3-1.5mm
1.49 - 1.67 sq m	
Country of Origin	Tannage
Spain	Chrome
Base Leather	Finish
Satin Suede	Suede
Character	Grain
Suede	Split
Hide Type	Configuration
Bovine	Double Butt

Testing
CA-117, NFPA-260



Chocolate Bronze Pearl



Cream Taupe Pearl



Smoke Taupe Pearl



Stormy Copper Pearl



Stormy Radiant Silver



Stormy Taupe Pearl



Taupe Taupe Pearl