



Notting Hill

Features

- Lightly polished aniline leather featuring a soft, drapey hand
- Inspired by garment leather
- Extensive color palette
- Natural characteristics will be visible

Avg. Hide Size

50 sq ft
4.65

Avg. Thickness

1-1.2mm

Country of Origin

Italy

Tannage

Chrome

Finish

Aniline Plus

Character

Smooth

Grain

Full Grain

Hide Type

Bovine

Configuration

Whole Hide

Testing

CA-117, NFPA-260, Crib5



Black



Blush



Bottle



Bourbon



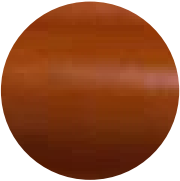
Brass



Brown



Chocolate



Copper



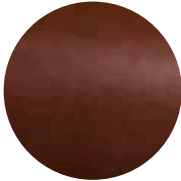
Parchment



Putty



Steel



Walnut