



Natura

Sourced from German hides, Natura embodies the essence of pure aniline leather. Each hide is carefully milled for a soft, supple hand and is left with a subtle polish for added dimension. Available in a curated assortment of colors, Natura is a versatile yet luxurious selection for any application.

Features

- Smooth hand, subtle polished appearance, variety of neutral color options

Avg. Hide Size

55-60 sq ft
5.11

Country of Origin

Germany

Finish

Pure Aniline

Hide Type

Bovine

Grain

Full Grain

Avg. Thickness

1.0-1.2mm

Tannage

Chrome

Character

Smooth

Configuration

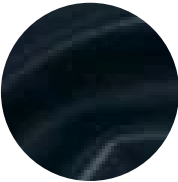
Whole Hide

Testing

Contact Account
Management



Black



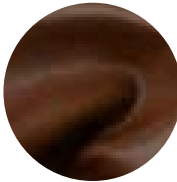
Blue Jean



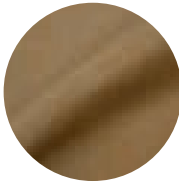
Brandy



Brass



Brown



Café Latte



Dark Brown



Forest



Grey



Parchment



Sand



Tan



Tuscan



Vanoni