



Messina

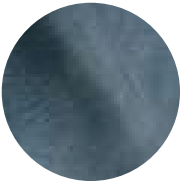
Crafted at a tannery in Tuscany, Messina is an aniline-plus shoulder hide that has a beautiful wax finish applied, creating a slight two-toned color variation throughout each hide. Available in cool, soothing shades that complement the natural characteristics of each hide, such as wrinkles, the attributes of Messina all come together to create a powerful visual appeal.



Features

- Natural color variation throughout hide, smaller hide size

Avg. Hide Size	Avg. Thickness
14-16 sq ft	2.6-2.8 mm
1.3	
Country of Origin	Tannage
Italy	Wet White
Finish	Character
Aniline Plus	Naturally Milled
Hide Type	Configuration
Bovine	Shoulder
Grain	Testing
Full Grain	Contact Account Management



Adriatic



Fern