



Legacy

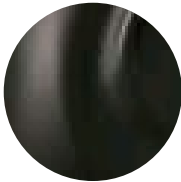
Crafted in Italy, Legacy is an exquisite semi-aniline leather that offers rich, uniform color and a soft, luxurious hand. Subtle tone-on-tone finishing cascades across the hide to showcase beautiful yet subtle highs and lows. Additionally, large hides ensure excellent cutting yields to enhance this leather’s modern-day appeal.



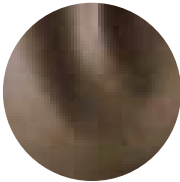
Features

- Exquisite semi-aniline finish
- Rich, uniform color
- Soft luxurious hand
- Subtle highs and lows

Avg. Hide Size	Avg. Thickness
50 sq ft	1-1.2 mm
4.65	
Country of Origin	Tannage
Italy	Chrome
Finish	Character
Semi-Aniline	Naturally Milled
Hide Type	Configuration
Bovine	Whole Hide
Testing	
Upon Request Only	



Hunter



Taupe