



# Harlowe

Our Harlowe embossing was designed to mimic a braided weave. This pattern runs horizontally across the hide and gives off a beautiful illusion on any base.



## Features

- Braided pattern
- Horizontal pattern direction

Avg. Hide Size	Avg. Thickness
16-18 sq ft	1.3-1.5mm
1.49	

Country of Origin	Tannage
Spain	Chrome

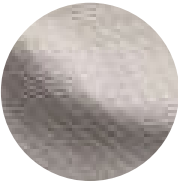
Finish	Character
Suede	Suede

Hide Type	Configuration
Bovine	Double Butt

Grain	Testing
Split	Contact Customer Care



Cream



Stormy