



# Dulaney

Dulaney is a semi-aniline leather created in South America, possessing a polished surface, smooth hand, and subtle pull up effect. Altogether, this creates hints of color variation throughout. This leather is also made with a protective finish, allowing it to be resilient in any application.

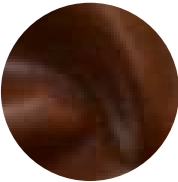
## Features

- Soft hand, saturated colors, durable semi-aniline finish

Avg. Hide Size	Avg. Thickness
40-45 sq ft	1.2-1.4 MM
3.72	
Country of Origin	Tannage
South America	Chrome
Finish	Character
Semi-Aniline	Small Pebble
Testing	
Contact Account	
Management	



Chestnut



Mahogany



Moss