



Dresden

Marked by its luxurious, supple hand and beautifully pronounced grain, Dresden captures the essence of understated elegance.

Features

- Semi aniline leather with improved color consistency
- Pronounced pebble grain
- Natural color palette
- Natural characteristics may be visible
- Suitable for high traffic areas

Avg. Hide Size

50 - 55 sq ft
4.65 - 5.11 sq m

Avg. Thickness

1.4-1.6mm

Country of Origin

Germany

Tannage

Chrome

Finish

Semi-Aniline

Character

Pebbled

Grain

Full Grain

Hide Type

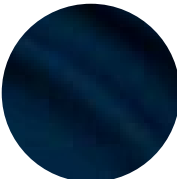
Bovine

Configuration

Whole Hide

Testing

CA-117, NFPA-260



Admiral



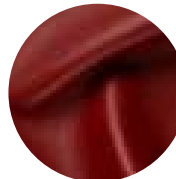
Arctic



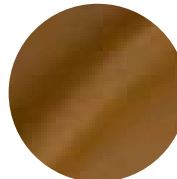
Bark



Barley



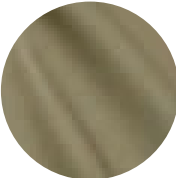
Berry



Bisque



Black



Celadon



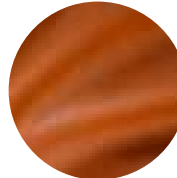
Cherry



Clay



Cocos



Copper



Crystal



Dark Brown



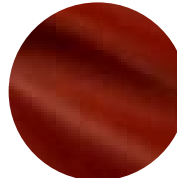
Emerald



Fog



Fudge



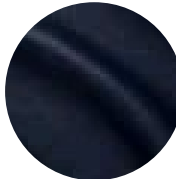
Garnet



Gray



Honey



Indigo



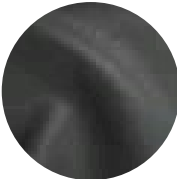
Light Grey



Nougat



Olive



Pavement



Pine



Putty



Reed



Rosewood



Sandlewood



Sesame



Slate



Smoke



Stone



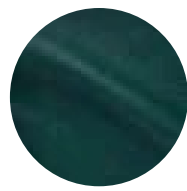
Sunset



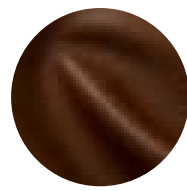
Tallow



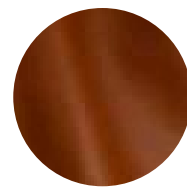
Teak



Teal



Truffle



Whiskey



White