



Dakota

Features

- Aniline leather featuring a lightly polished, translucent surface
- Vegetable retanned for a robust hand
- Hand stained to ensure authentic appearance and patina
- Vibrant color palette

Avg. Hide Size

50 – 55 sq ft
4.65 – 5.11 sq m

Country of Origin

Thailand

Finish

Aniline Plus

Grain

Full Grain

Configuration

Whole Hide

Avg. Thickness

1-1.3mm

Tannage

Chrome

Character

Smooth

Hide Type

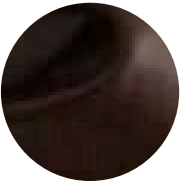
Bovine

Testing

CA-117



Black



Charcoal



Crimson



Dove



Evergreen



Fossil



Modern Saddle



Molasses



Moss



Putty



Sapphire



Tobacco Brown



Wine