



# Castello

Castello is crafted from European hides and tanned in the northern Italy. We love this leather for its uniformity in color and finish, with minimalistic hair-cell details for a bit of visual texture. Castello has a smooth hand and matte finish, with limitless application options.

## Features

- Smooth hand and feel
- Small hair cell print
- Color consistency throughout entire hide

### Avg. Hide Size

45-50 sq ft  
4.18

### Country of Origin

Italy

### Finish

Pigmented

### Hide Type

Bovine

### Grain

Full Grain

### Avg. Thickness

1.1-1.2 mm

### Tannage

Chrome

### Character

Embossed

### Configuration

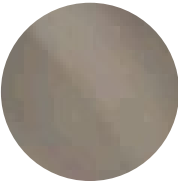
Whole Hide

### Testing

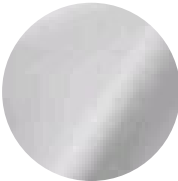
Contact Customer Care



Auburn



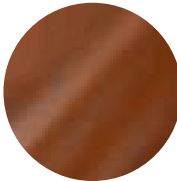
Beige



Bianco



Black



Clay



Cloud



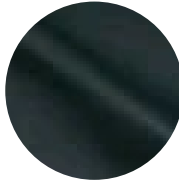
Cocoa



Crema



Cypress



Hunter



Jam



Latte



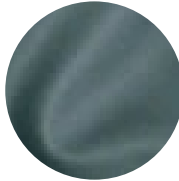
Midnight



Mouse



Mushroom



Ocean



Pewter



Plum



Rose



Ruby



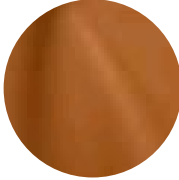
Slate



Stone



Taupe



Terra



Wineberry