



# Cambridge

## Features

- Full grain
- Aniline dyed - pull up leather
- Soft wax finish
- Supple hand

### Avg. Hide Size

35 - 40 sq ft  
3.25 - 3.72 sq m

### Country of Origin

India

### Finish

Pure Aniline

### Grain

Full Grain

### Configuration

Whole Hide

### Avg. Thickness

1.6-1.8mm

### Tannage

Chrome

### Character

Smooth

### Hide Type

Buffalo

### Testing

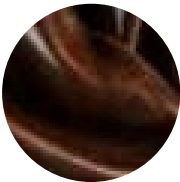
Upon Request Only



Blue Smoke



Cloud



Dark Rum



Linen



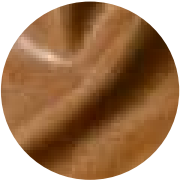
Moss



Pigeon



Sapphire



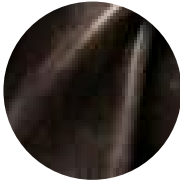
Sunflower



Sycamore



Winter Pine



Wolf