



Burnham

Casual elegance describes this illustrious leather from New Zealand’s North Island. An aniline leather dressed with wax and oil that is then milled and polished. The tanner’s artistry is seen in the burnished, polished surface that complements and contrasts with a velvety texture that showcases a luxurious tracking effect that will become more visually appealing with use and wear. The leather has a cool “drapey” hand that tailors beautifully on a variety of frames.

Features

- Aniline nubuck leather
- Waxed, oiled, and milled to achieve soft, drapey hand
- Exhibits worn-in aesthetic
- Natural characteristics will be visible

Avg. Hide Size

35 – 40 sq ft
3.25 – 3.72 sq m

Country of Origin

New Zealand

Finish

Nubuck

Grain

Nubuck

Configuration

Whole Hide

Avg. Thickness

1.2-1.4mm

Tannage

Chrome

Character

Tumbled

Hide Type

Bovine

Testing

CA-117, NFPA-260, ASTM
D 2211 Elongation of
Leather, ASTM D 4157-13
Wyzenbeek



Basil



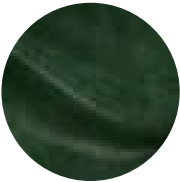
Beige



Black



Cadet Blue



Juniper



Marmalade



Molasses



Moss



Parchment



Plum



Sea Salt



Seafoam



Shale



Sky



Slate



Sunflower



Sycamore