

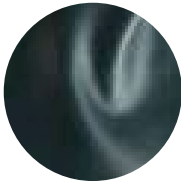


Acadia

Features

- Semi-aniline with natural aesthetic
- Rich, vibrant color palette
- Uniform color consistency
- Resistance to scratching
- Stain treatment added for top performance

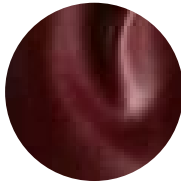
Avg. Hide Size	Avg. Thickness
50 sq ft	1.1-1.3mm
4.65	
Country of Origin	Tannage
Italy	Chrome
Finish	Character
Semi-Aniline	Smooth
Grain	Hide Type
Corrected	Bovine
Configuration	Testing
Whole Hide	CA-117, NFPA-260, AATCC 8 Colorfastness to Crocking, AATCC 16-3 Lightfastness, ASTM D 2097 Flex Testing of Finish, ASTM D 4157-13 Wyzenbeek, ASTM D 4705 Stitch Tear Strength, ASTM D 2208 Breaking Strength, ASTM D 2211 Elongation of Leather, ASTM D 6182 Flexibility and Adhesion of Leather, ASTM D 6012 Color Transfer, Fluid Resistance



Aegean



Iron



Maraschino



Sailboat



Sunrise



Thunder