



Tribeca

Crafted in Italy, Tribeca is a favorite amongst our semi-aniline leathers. Created from German bull hides, this leather has a tight grain with a smooth breathable finish. With a lightweight hand featuring a distinctive pebble-grain and a protective finish, Tribeca is a go-to for all industries.

Carbon Neutral Leather by Moore & Giles

By choosing Tribeca, you will be offsetting embodied carbon impact through verified carbon offsets. [Read More](#)

Features

- Beautiful pebble grain added for extra dimension and texture
- Soft drapey hand
- Finish has been applied for excellent color consistency
- Ideal for public spaces

Avg. Hide Size

50 sq ft
4.65

Country of Origin

Italy

Finish

Semi-Aniline

Grain

Corrected

Configuration

Whole Hide

Avg. Thickness

1-1.2mm

Tannage

Chrome

Character

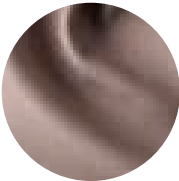
Pebbled

Hide Type

Bovine

Testing

CA-117, NFPA-260, ASTM D 2097 Flexing Crack Resistance, ASTM D 6182 Flexibility and Adhesion of Leather, ASTM D 4705 Stitch Tear, ASTM D 6012 Resistance to Bleeding (Color Transfer), ASTM 2208-16 Seam Breakage, ASTM D 2211 Elongation



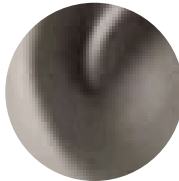
Alpine



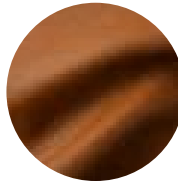
Arctic White



Black



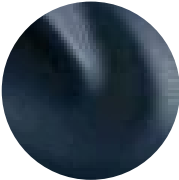
Chelsea



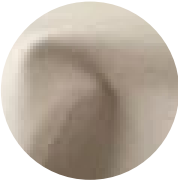
Chestnut



Chianti



Cobalt



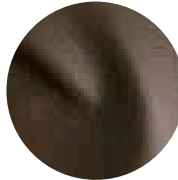
Cream



Espresso



Evening Dove



Fedora



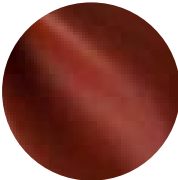
Frost



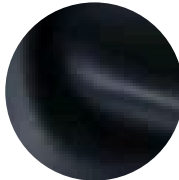
Glass



Granite



Habanero



Indigo



Juniper



Lagoon



Laurel



Mayan



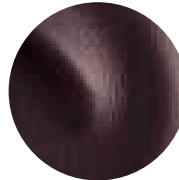
Merlot



Moonlight



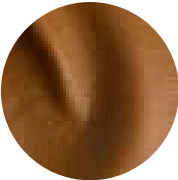
Nightfall



Orchid



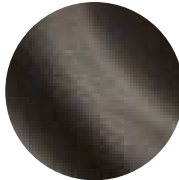
Oyster



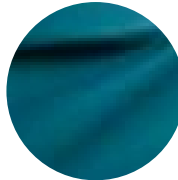
Parquet



Pewter



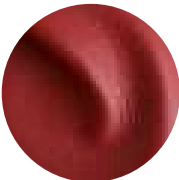
Quarry



Riviera



Sandstorm



Scarlet



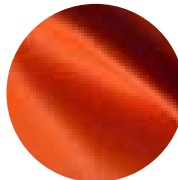
Sky Blue



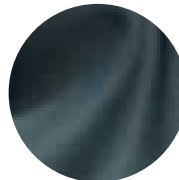
Smoke



Stone



Tango



Tidal

of Leather, Fluid
Resistance



Zest