



Notting Hill

Features

- Lightly polished aniline leather featuring a soft, drapey hand
- Inspired by garment leather
- Extensive color palette
- Natural characteristics will be visible

Avg. Hide Size	Avg. Thickness
50 sq ft	1-1.2mm
4.65	
Country of Origin	Tannage
Italy	Chrome
Finish	Character
Aniline Plus	Smooth
Grain	Hide Type
Full Grain	Bovine
Configuration	Testing
Whole Hide	CA-117, NFPA-260, Crib5



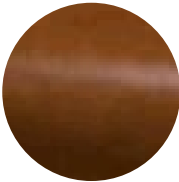
Black



Blush



Bottle



Bourbon



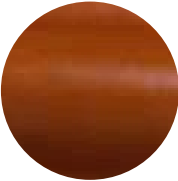
Brass



Brown



Chocolate



Copper



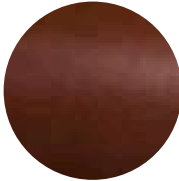
Parchment



Putty



Steel



Walnut