



Manta Ray

Manta Ray is a new interpretation of Shagreen with a bolder, more visual texture. This leather’s surprisingly soft, velvety surface and æso nowæ exotic sexiness further enhance its appeal.

This is made to order. Production time is 2-3 weeks. Samples are stocked in limited quantity and may not be immediately available.



Features

- Suede transfer pattern
- Exotic stingray detail

Avg. Hide Size	Avg. Thickness
16 – 18 sq ft	1.3-1.5mm
1.49 – 1.67 sq m	
Country of Origin	Tannage
Spain	Chrome
Finish	Character
Suede	Suede
Grain	Hide Type
Split	Bovine
Configuration	Testing
Double Butt	CA-117



Black Bronze



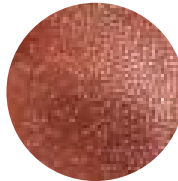
Blue Moon



Cream



Espresso



Flame



Glamour Blue



Glamour Green



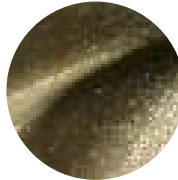
Glamour Red



Glamour Silver



Natural Blue



Pistache



Sky Blue



Taupe



Umber