



# Dresden

Marked by its luxurious, supple hand and beautifully pronounced grain, Dresden captures the essence of understated elegance.

## Features

- Semi aniline leather with improved color consistency
- Pronounced pebble grain
- Natural color palette
- Natural characteristics may be visible
- Suitable for high traffic areas

### Avg. Hide Size

50 – 55 sq ft  
4.65 – 5.11 sq m

### Country of Origin

Germany

### Finish

Semi-Aniline

### Grain

Full Grain

### Configuration

Whole Hide

### Avg. Thickness

1.4-1.6mm

### Tannage

Chrome

### Character

Pebbled

### Hide Type

Bovine

### Testing

CA-117, NFPA-260



Admiral



Arctic



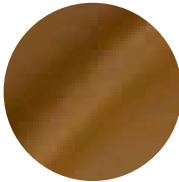
Bark



Barley



Berry



Bisque



Black



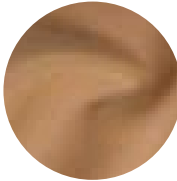
Celadon



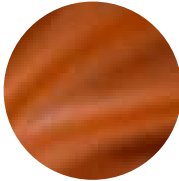
Cherry



Clay



Cocos



Copper



Crystal



Dark Brown



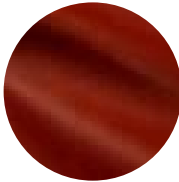
Emerald



Fog



Fudge



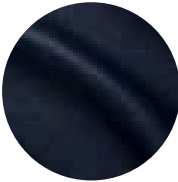
Garnet



Gray



Honey



Indigo



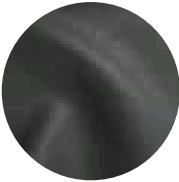
Light Grey



Nougat



Olive



Pavement



Pine



Putty



Reed



Rosewood



Sandlewood



Sesame



Slate



Smoke



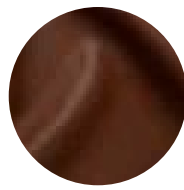
Stone



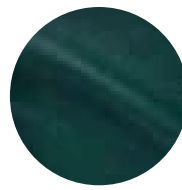
Sunset



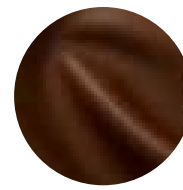
Tallow



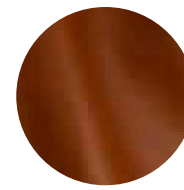
Teak



Teal



Truffle



Whiskey



White