



Chainmaille

Chainmaille is an intricate embossing that forms a surface that is both classic and modern.

This is made to order. Production time is 2-3 weeks. Samples are stocked in limited quantity and may not be immediately available.



Features

- Hide is sided for each half up to 25 sf

Finish

Aniline Plus

Grain

Full Grain

Configuration

Half Hide

Avg. Thickness

1.2-1.4mm

Tannage

Chrome

Testing

Upon Request Only

Character

Embossed

Hide Type

Bovine

Avg. Hide Size

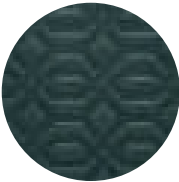
25 sq ft
2.32

Country of Origin

Italy

Base Leather

Barrington



Virtue Aegean



Virtue Chestnut



Virtue Cranberry



Virtue Flaxen



Virtue Fossil



Virtue Lagoon



Virtue Shadow



Virtue Smoke