



Brompton

Crafted at an Italian tannery with over one hundred and fifty years of experience, Brompton is a timeless, aniline plus leather that represents a blending of today's tanning technology with the dedication and skill of artisans spanning multiple generations.

Features

- Aniline wax pull-up leather
- Exhibits dramatic highs and lows
- Hot wax tannage technique
- Natural characteristics will be visible

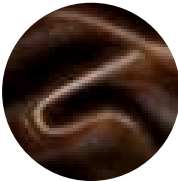
Avg. Hide Size	Avg. Thickness
50 – 55 sq ft	1-1.2mm
4.65 – 5.11 sq m	
Country of Origin	Tannage
Italy	Chrome
Finish	Character
Aniline Plus	Smooth
Grain	Hide Type
Full Grain	Bovine
Configuration	Testing
Whole Hide	CA-117, NFPA-260, ASTM D 2211 Elongation of Leather, CAN/ULC-S102 2S Surface Burn of Building Materials and Assemblies, ASTM D 4157-13 Wyzenbeek



Black



Black and Blue



Brown



Chestnut



Spanish Moss



Vintage



Walnut



Wolf