

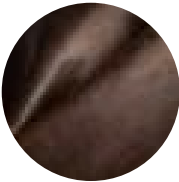


Brentwood

Features

- Aniline dyed, pull-up
- Full-bodied with soft wax finish
- Subtle variation
- Sophisticated elegance

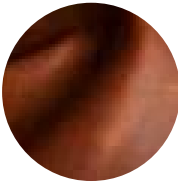
| | |
|--------------------------|-----------------------|
| Avg. Hide Size | Avg. Thickness |
| 50 sq ft | 1.4-1.6mm |
| 4.65 | |
| Country of Origin | Tannage |
| Italy | Chrome |
| Finish | Character |
| Aniline Plus | Tumbled |
| Grain | Hide Type |
| Full Grain | Bovine |
| Configuration | Testing |
| Whole Hide | CA-117, NFPA-260 |



Anthracite



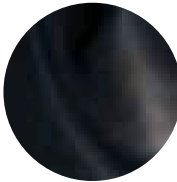
Black



Cuero



Marsh



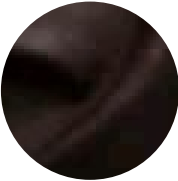
Navy



Red Oak



Tan



Truffle



Wolf