



Boa

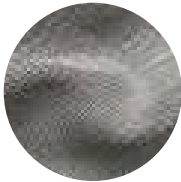
The Boa collection features an exotic reptile-inspired transfer on our Satin Suede base. The dynamic pattern creates a stunning visual effect on the suede’s soft surface, injecting elements of dimension and texture that accentuate the leather’s tactile qualities and luxurious nap. The end result is a leather with enhanced durability that draws you in with is lavish glamour and modern elegance.

This is made to order. Production time is 2-3 weeks. Samples are stocked in limited quantity and may not be immediately available.

Features

- A soft drapey aniline suede
- Extensive color palette
- Luxurious tracking effect
- Water resistant properties

Avg. Hide Size	Avg. Thickness
16 – 18 sq ft	1.3-1.5mm
1.49 – 1.67 sq m	
Country of Origin	Tannage
Spain	Chrome
Base Leather	Finish
Satin Suede	Suede
Character	Grain
Suede	Split
Hide Type	Configuration
Bovine	Double Butt
Vert. Plate Ln	Vert. Repeat
n/a	n/a
Hor. Plate Ln	Horz. Repeat
59”	1.25”
Testing	
CA-117, NFPA-260	



Black White



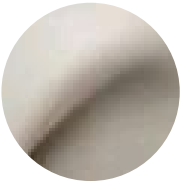
Blue Moon Bone



Chocolate Bronze Pearl



Cream Bone



Cream White



Espresso Bone



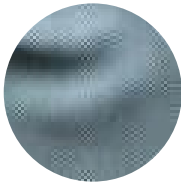
Glamour Bone



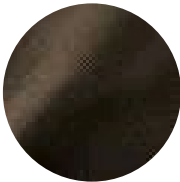
Glamour White



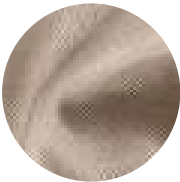
Natural Antique Gold Matte



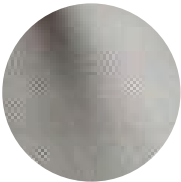
Pacific White



Smoke Black Matte



Smoke Bone



Stormy White

